

# PURITY Steam




## Optimum water quality for steam cooking and baking

With the PURITY Steam, calcium and magnesium ions are selectively removed from the drinking water using the flow method via an ion exchanger. Furthermore, the filter material binds metals such as lead and copper and reduces substances that negatively affect taste and aroma as well as organic contaminants. The increased flow and reduced pressure loss also allow the smooth operation of large combi steamers and ovens.



## BRITA Professional Filter Service App

The Filter Service App is your ideal assistant. This unique, comprehensive tool helps determine the right type and size of filter for your precise needs. It provides detailed installation guidance for service engineers, calculates when cartridges will need replacing – and has a wealth of other, innovative capabilities.

Download for free on  Download on the App Store



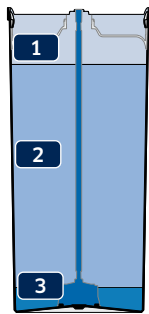
Or visit <https://professional.brita.net/app>

## The benefits to you

- Baked products, fish, meat and vegetables are cooked to their best
- High capacity with reliable reduction of limescale formation
- Fine steam jets remain open longer
- Bypass settings specially adapted to different steamers and ovens
- Improved flow performance of up to 500 l/h with 1 bar pressure loss

# Systematic filter technology

- 1 Pre-filtration**  
A fleece at the inlet reliably retains coarse particles and, with its laminar water distribution, ensures a high utilisation of the downstream filter medium – independent of water flow rates and pressure surges.
- 2 Carbonate hardness reduction**  
The filter medium reduces the carbonate hardness content in a targeted way. As a result, unwanted limescale formation is prevented. With the integrated activated carbon element, chlorine, chlorine compounds and organic elements are reduced. In this way unwanted taste and aroma elements do not enter the filtrate.
- 3 Fine filtration**  
At the end of the filtration process a fleece retains any fine particles.



The illustration serves as explanation of the filter technology. It is not to scale.

# Quality and safety

**Optimum water quality**  
Outstanding and consistent water quality – free of unwanted taste and aroma elements.

**Maximum product safety**  
For uninterrupted operation and safe use.

**Simple to use**  
Operation is simpler and easier than ever.

The food safety of BRITA Professional water filter products is tested and monitored by independent institutes. Electronic components are CE-certified and labelled.



\*applies to all materials in contact with water

PURITY Steam	450	600	1200
Technology	decarbonisation		
Capacity <sup>1</sup> with a carbonate hardness of 10 °dH (bypass position 1)	3,680 l	5,771 l	10,800 l
Comparable capacity according to DIN 18879-1:2007: The comparable capacity is a standardised indicator to facilitate comparison of different filters. The comparable capacity is determined under extreme conditions. Normally the usable capacity in practical operation is clearly higher than the comparable capacity and may vary greatly depending on the usage conditions.			
Comparable capacity	2,754 l	4,734 l	9,521 l
Max. operating pressure	6.9 bar		
Water intake temperature	4 - 30°C		
Flow rate with 1 bar pressure loss	max. 500l/h		
Nominal flow	max. 120l/h		
Pressure loss at nominal flow	0.36 bar		
Dimensions (height/width)	408 / 249 mm	520 / 249 mm	550 / 288 mm
Weight (dry/wet)	10 / 12 kg	12 / 15 kg	18 / 24 kg
Connections (input/output)	G1" / G3/4"		
Operating position	horizontal or vertical		
Operation	Use after inhouse softening units possible		
PURITY Steam	Order number		
New filter (complete system with filter cartridge) with measuring and display unit	1002912	1002918	1002923
New filter (complete system with filter cartridge) without measuring and display unit	1000654	1000245	1000226
Replacement cartridge	1000653	1000252	1000231
Accessories	Order number		
BRITA FlowMeter 10 - 100	1033041		
BRITA FlowMeter 100 - 700	1033042		
Carbonate hardness test kit	710800		

Appropriate hoses and hose sets from our comprehensive FlexConnect range as well as other accessories can be found in our price list.

**Explanatory notes**  
<sup>1</sup>The capacities given have been tested and calculated on the basis of normal application and machine conditions. Due to external influences (e.g. variations in raw water quality and/or machine type), deviations from these results can occur.

Only drinking quality water may be used as the water supply for BRITA water filters.

For more information please contact:

**BRITA Water Filter Systems Ltd.**  
BRITA House | 9 Granville Way | Bicester | OX26 4JT | United Kingdom  
Tel.: +44 844 742-4990 | Fax: +44 186 936-5962  
clientservices@brita.co.uk | www.brita.co.uk

**BRITA Water Filter Systems Distributors Pty Ltd**  
Suite 2, Level 9, 123 Epping Road | Macquarie Park, NSW, 2113 | Australia  
Tel.: +61 1300 955-021 | NZ: 0800 482-008  
professional@brita.com.au | www.brita.com.au

**Headquarters: BRITA GmbH**  
Heinrich-Hertz-Strasse 4 | 65232 Taunusstein | Germany  
Tel.: +49 6128 746-0 | Fax: +49 6128 746-5033  
info@brita.net | www.brita.de

## BRITA Recycling Program

Environmental protection and recycling are part of the BRITA corporate philosophy. As early as 1992, we established a recycling programme for our filter cartridges – the first in our industry. Our plant in Taunusstein, Germany, processes cartridges from both the hospitality industry and private households.

